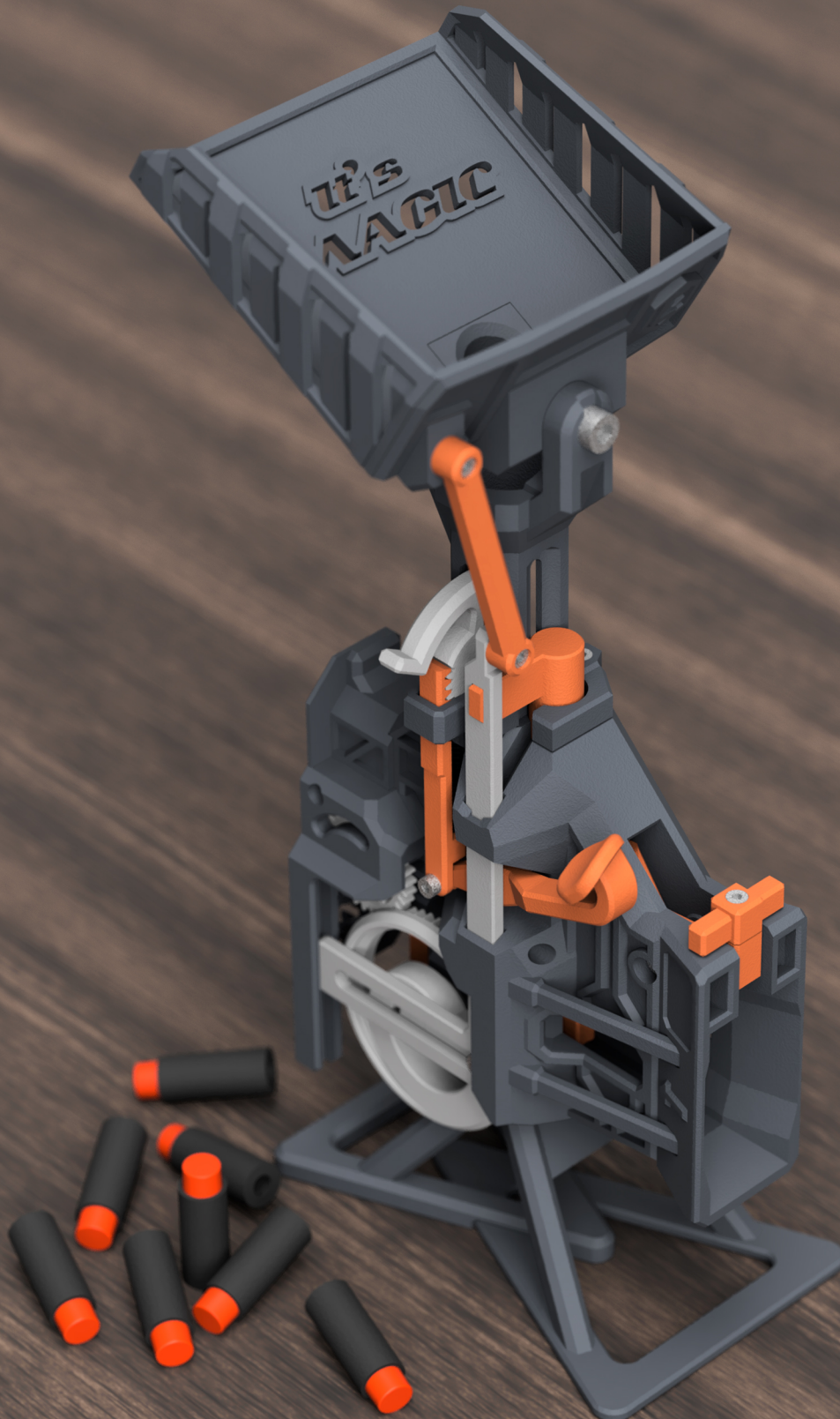


MAGIC DART LOADER

ASSEMBLY INSTRUCTIONS



BY CREATEWITHEZEKIEL

RENDERED IMAGE

DART LOADING REIMAGINED

MADE IN SINGAPORE

ACKNOWLEDGEMENTS

The creation of this dart loader and all my other products is not entirely mine but my Heavenly Father's. I pray and Christ gives me clues and a direction whenever I face challenges during the design.

Matthew 7:7–8. "Ask, and it will be given to you; seek, and you will find; knock, and it will be opened to you. For everyone who asks receives, and the one who seeks finds, and the one who knocks it will be opened."

He loves us all dearly and He would love to have a personal relationship with you.

DISCLAIMER

For the best user experience, assemble the Magic Dart Loader in a well lit environment and use the proper equipment wherever necessary.

We at CreateWithEzekiel cannot control the conditions in which you assemble the Magic Dart Loader. For this and other reasons, we do not assume responsibility, and expressly disclaim liability for loss, injuries, damage or expense arising out of using this product.

This manual and its contents are not affiliated with any external business or organisation.

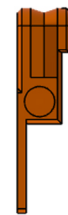
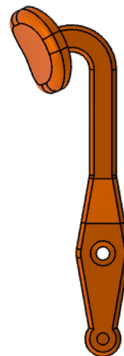
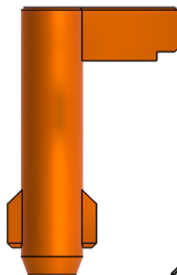
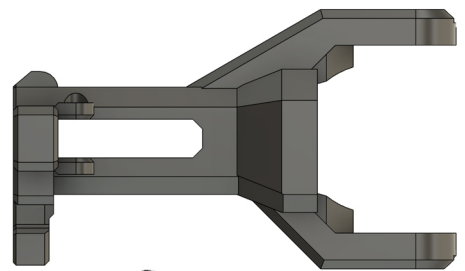
Visit these sites for the latest news and products.

<https://www.createwithzekiel.com>

<https://www.facebook.com/createwithzekiel>



PARTS LIST
(NOT TO SCALE)

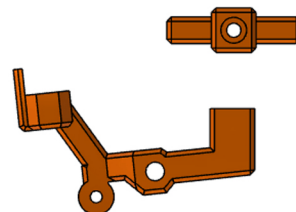
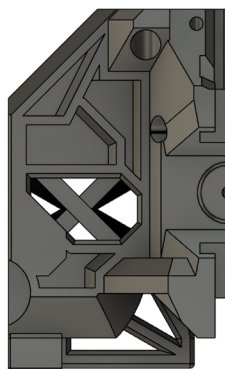
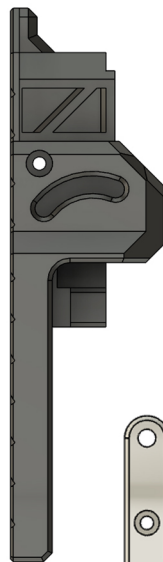
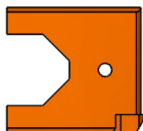


M3x8

M3x12

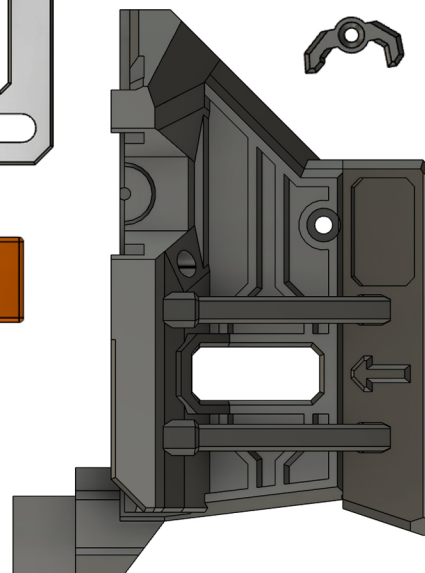
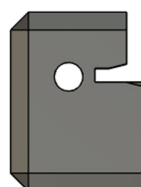
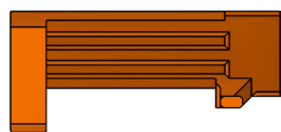
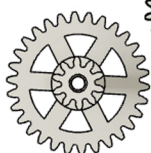
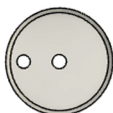
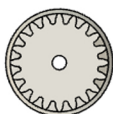
M3x6

M3x8



M3x12

M3x16



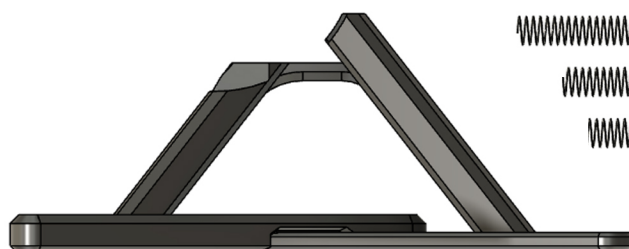
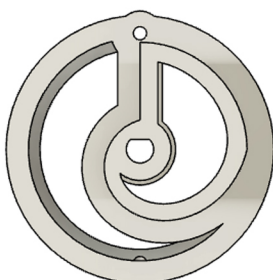
M3x20

M4x12

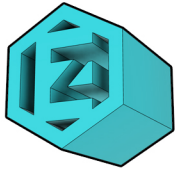
M4x16

M6x12

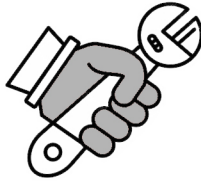
M6x12



LEGEND



OBJECTS COLOURED IN BLUE
REPRESENT OBJECTS IN FOCUS



USE METRIC HAND TOOLS ONLY AND
DO NOT OVERTIGHTEN FASTENERS



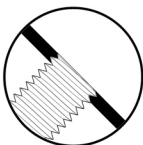
THIS ICON APPEARS FOR CRITICAL
AND CHALLENGING STEPS



THIS ICON INDICATES PARTS THAT
CAN FREELY ROTATE
(FASTENERS FOR THESE PARTS TO BE SET SLIGHTLY LOOSER)



THIS ICON INDICATES PARTS THAT
REQUIRE LUBRICATION (SILICONE BASED)
(SOME PARTS ARE LUBRICATED ONLY IN A SMALL SECTION)



THIS ICON INDICATES SCREWS THAT
SIT FLUSH WITH THE PRINTED PART
AFTER FASTENING

SCREW HOLES IN PRINTED PARTS ARE NOT THREADED AND
ARE SMALLER THAN THE SCREW. SOME FORCE WILL
BE REQUIRED TO START THE THREAD WITH THE SCREW.

LEGEND

REQUIRED HAND TOOLS



ALLEN WRENCH WITH BALL-END
(HIGHLY RECOMMENDED)

SIZES 1.5MM, 2.5MM, 3MM, 5MM



TWEEZERS FOR INSTALLING
SMALL SPRINGS

RECOMMENDED TOOLS TO CLEAN EXCESS MATERIAL OFF PRINTED PARTS



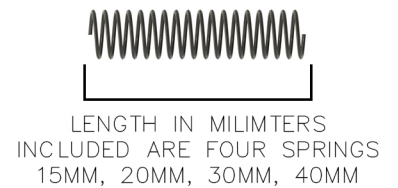
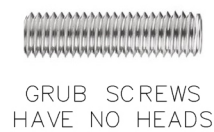
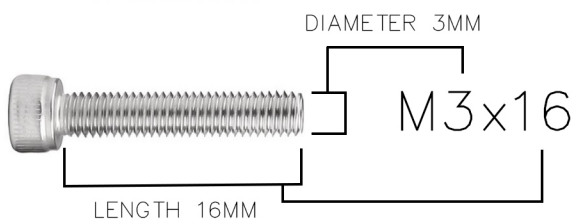
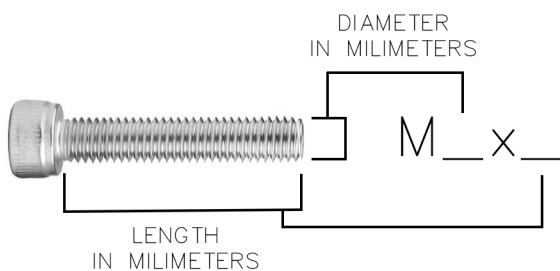
PENKNIFE



FLAT FILE APPROXIMATELY
8MM IN WIDTH

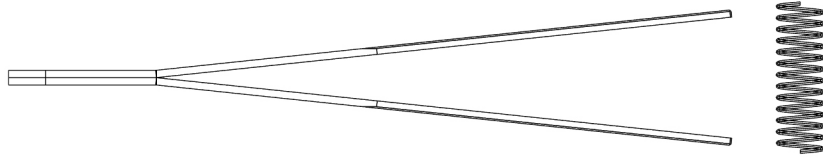
ROUND FILE APPROXIMATELY
4MM IN DIAMETER

HOW TO READ SCREW AND SPRING SIZES

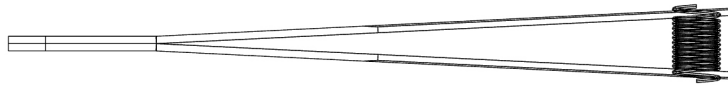


TAKE CAUTION WHEN INSTALLING SPRINGS
THEY CAN GET LOST EASILY

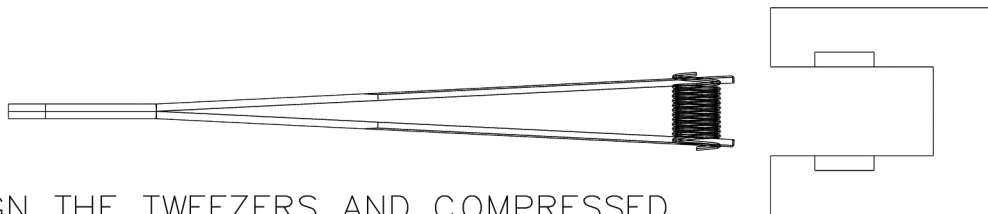
HOW TO INSTALL SPRINGS



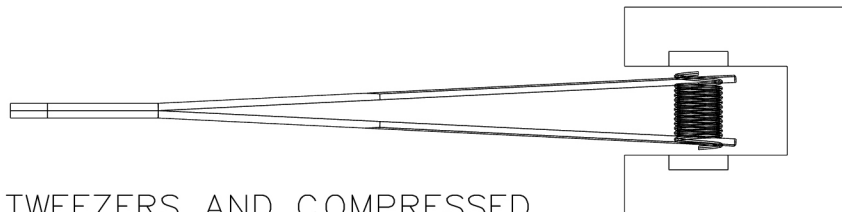
EXPAND THE TWEEZERS TO FIT THE SPRING



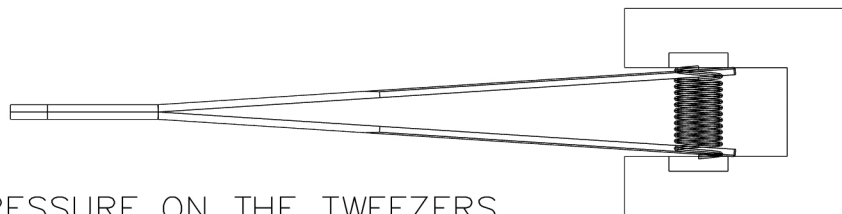
COMPRESS THE SPRING WITH THE TWEEZERS
AND LEAVE THE TWO SPRING ENDS EXPOSED



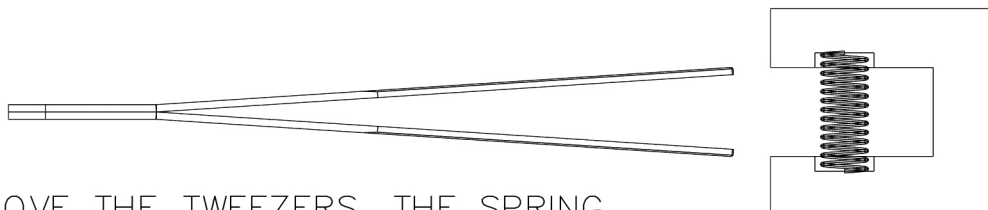
ALIGN THE TWEEZERS AND COMPRESSED
SPRING WITH THE OPENING



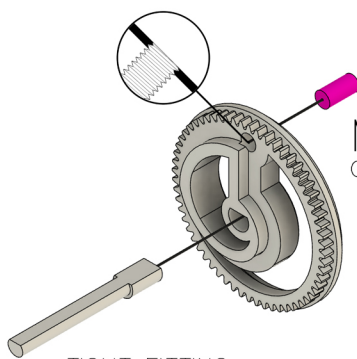
BRING THE TWEEZERS AND COMPRESSED
SPRING INTO THE SPRING RECESS



RELEASE PRESSURE ON THE TWEEZERS
SLIGHTLY TO ALLOW THE SPRING ENDS
TO LATCH IN THE SPRING RECESS



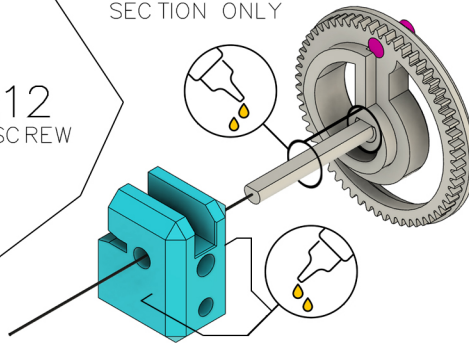
REMOVE THE TWEEZERS, THE SPRING
WILL EXPAND AUTOMATICALLY



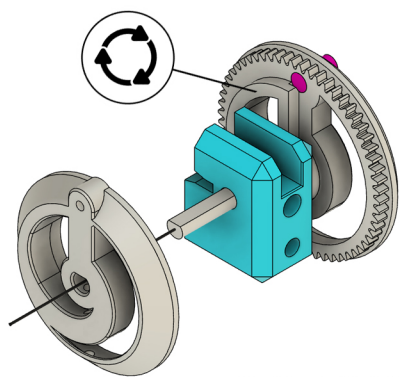
M6x12
GRUB SCREW

TIGHT FITTING
SOME FORCE REQUIRED
(SPARE AXLE IS PROVIDED)

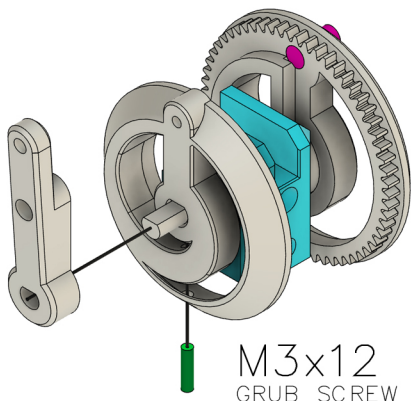
LUBRICATE THIS
SECTION ONLY



LUBRICATE SURFACES

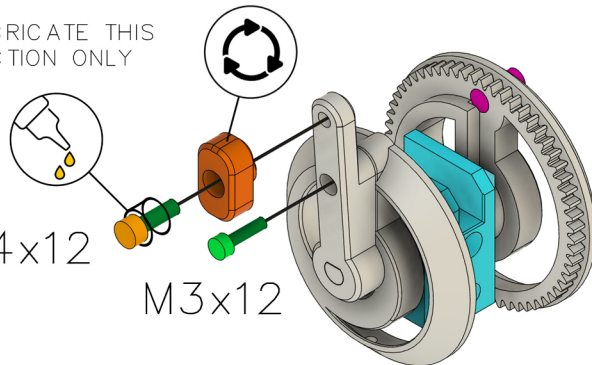


DOUBLE CHECK
ORIENTATION OF PARTS



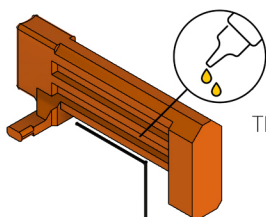
M3x12
GRUB SCREW

LUBRICATE THIS
SECTION ONLY

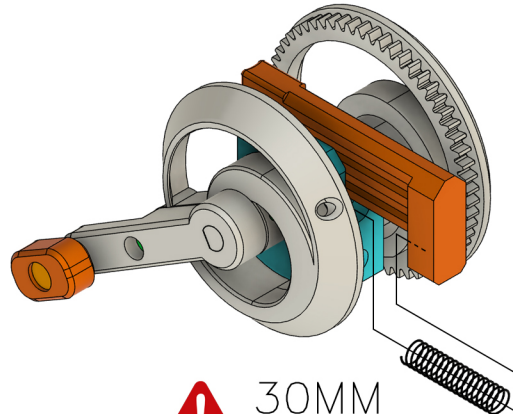
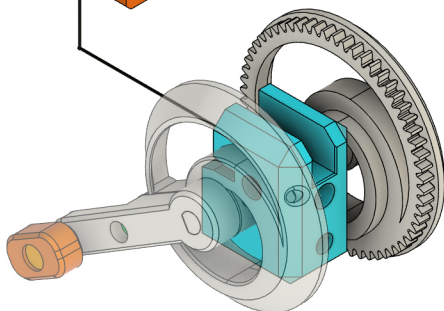


M4x12

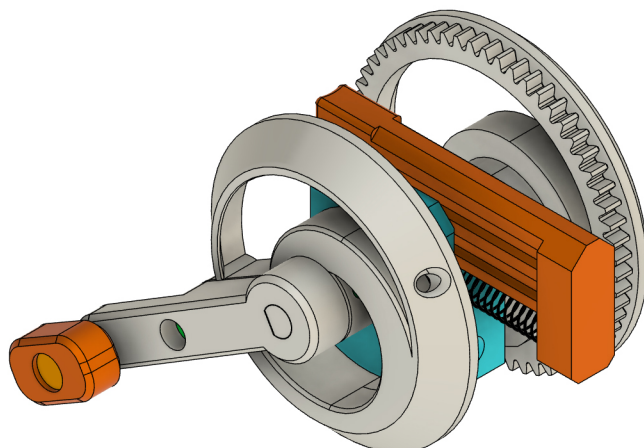
M3x12



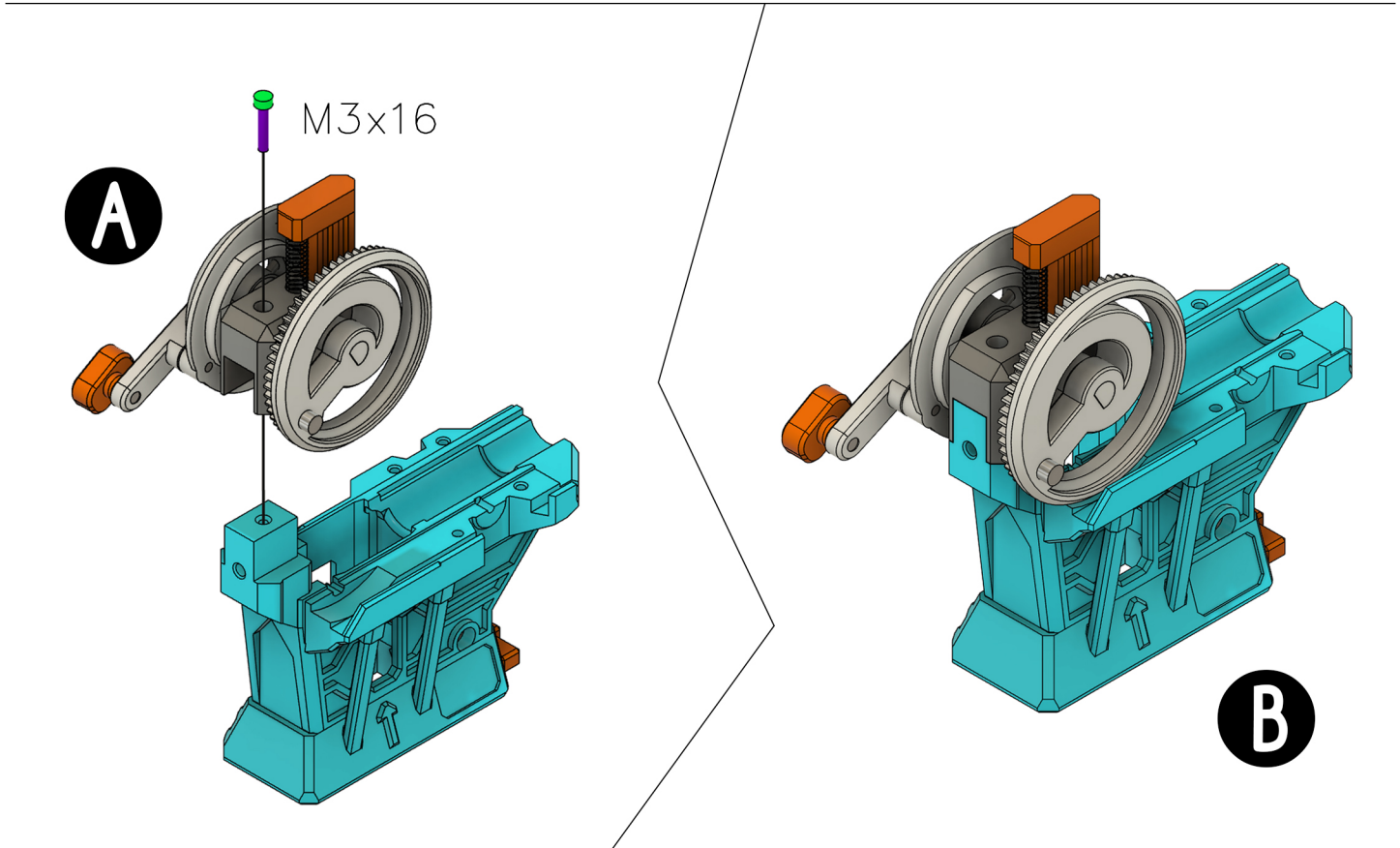
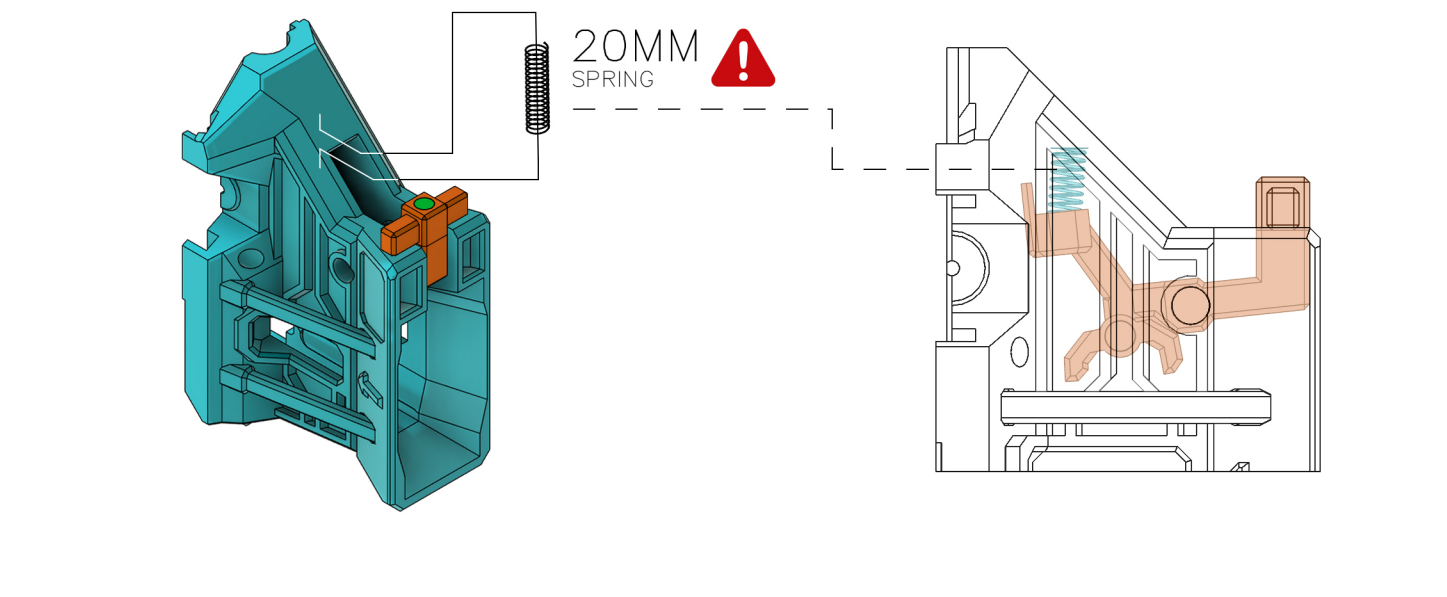
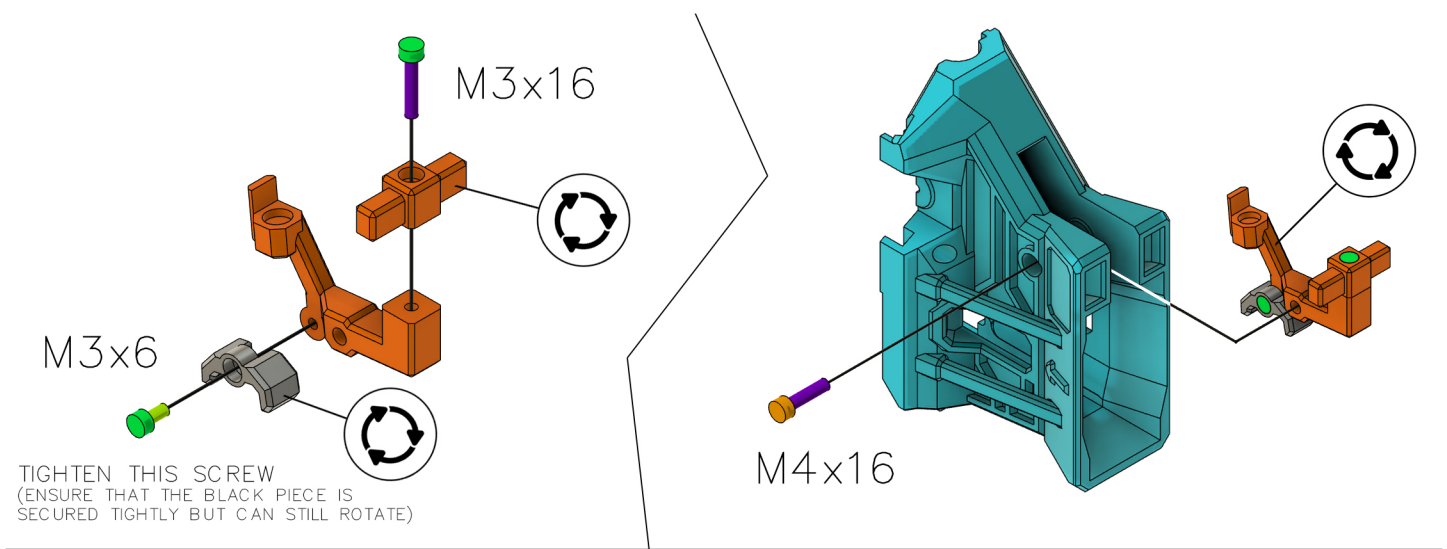
LUBRICATE
THE GROOVES



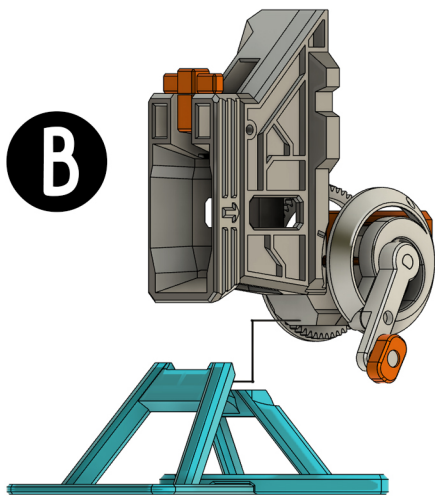
30MM
SPRING



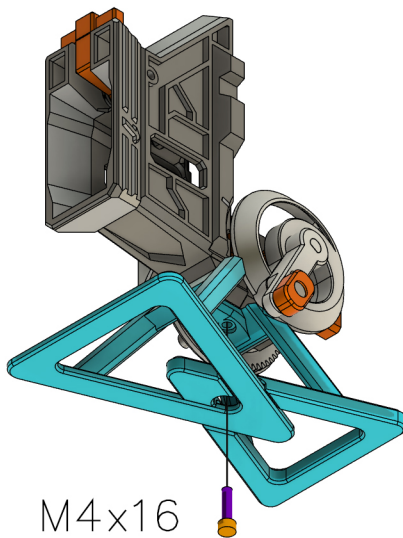
A



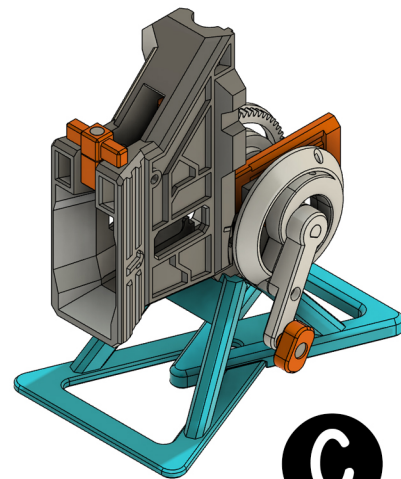
B



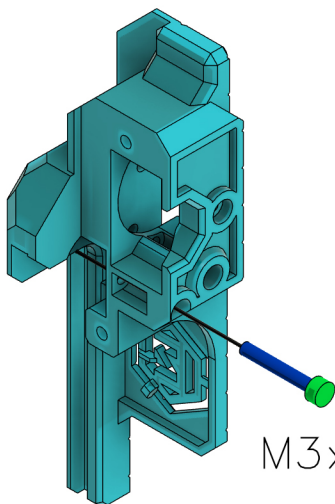
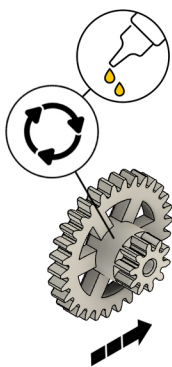
TIGHT FITTING
SOME FORCE REQUIRED



M4x16

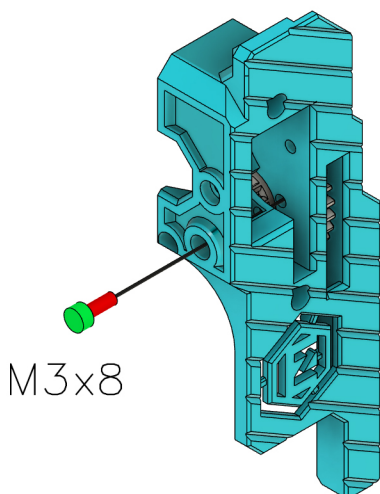
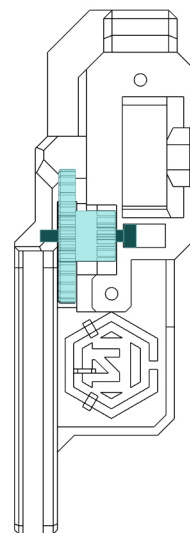
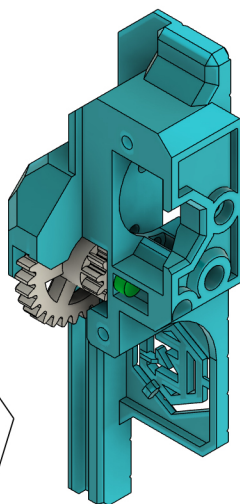


C

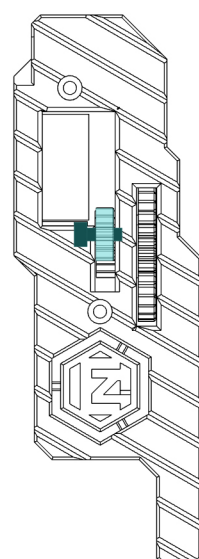
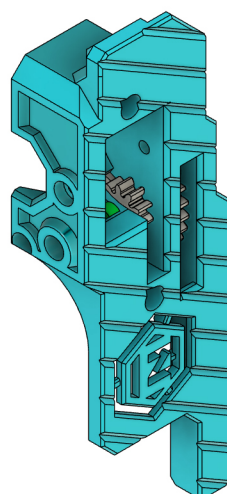
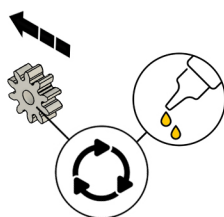


M3x20

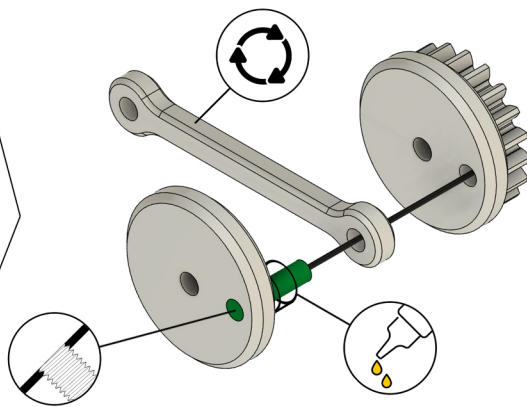
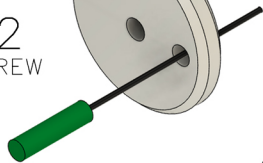
REMOVE EXCESS MATERIAL BETWEEN
GEAR TEETH BEFORE INSTALLING



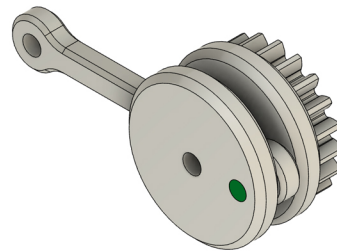
M3x8



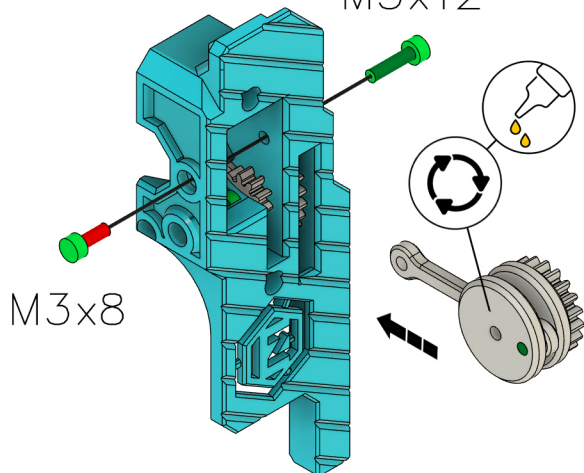
M3x12
GRUB SCREW



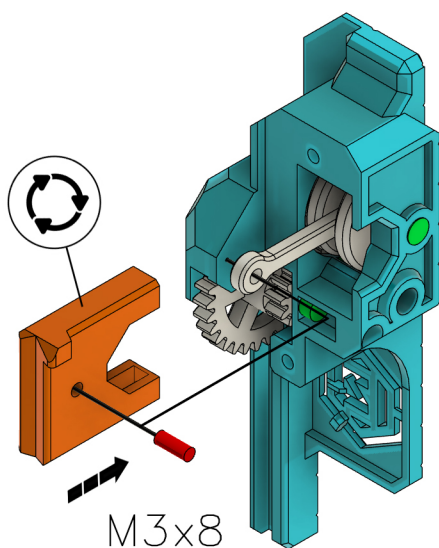
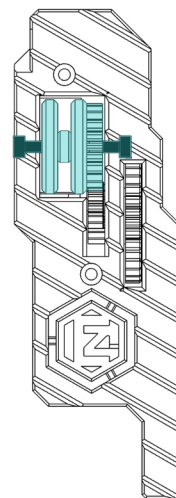
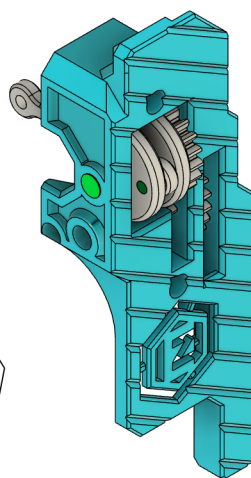
LUBRICATE THIS
SECTION ONLY



M3x12

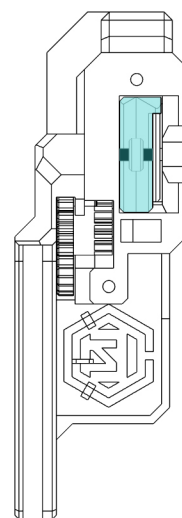
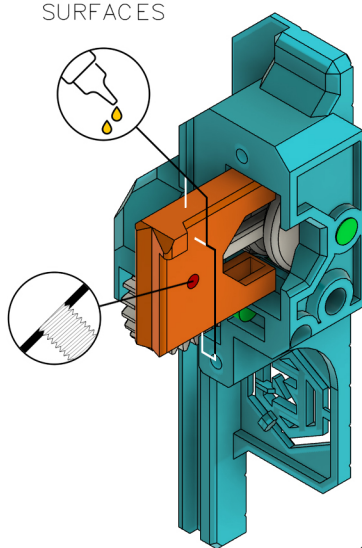


M3x8

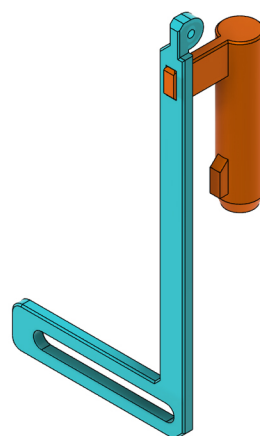
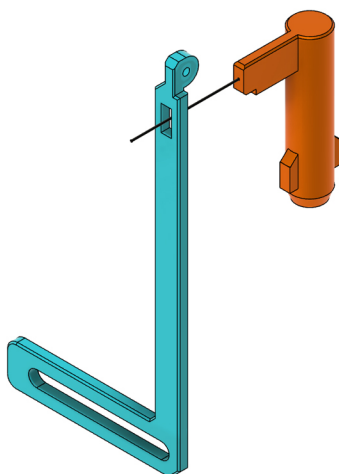
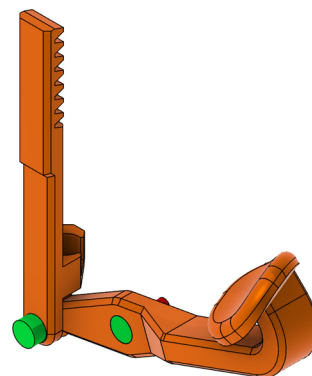
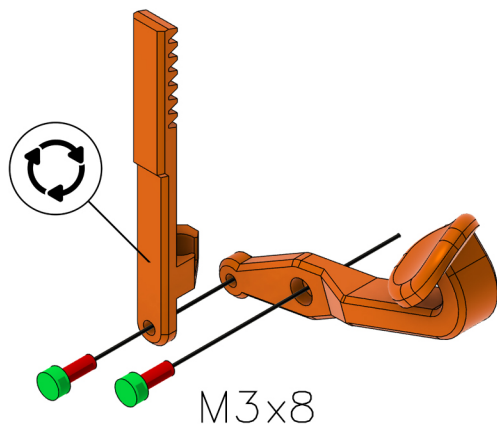


M3x8
GRUB SCREW

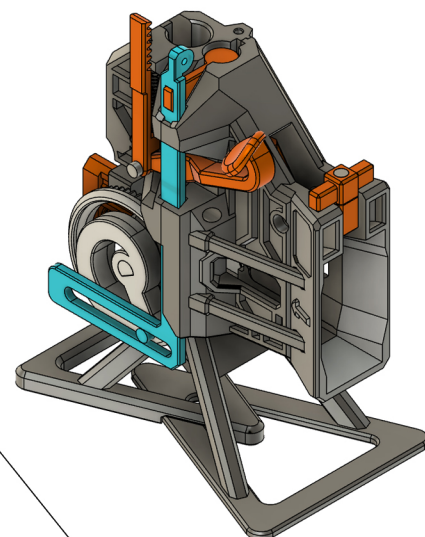
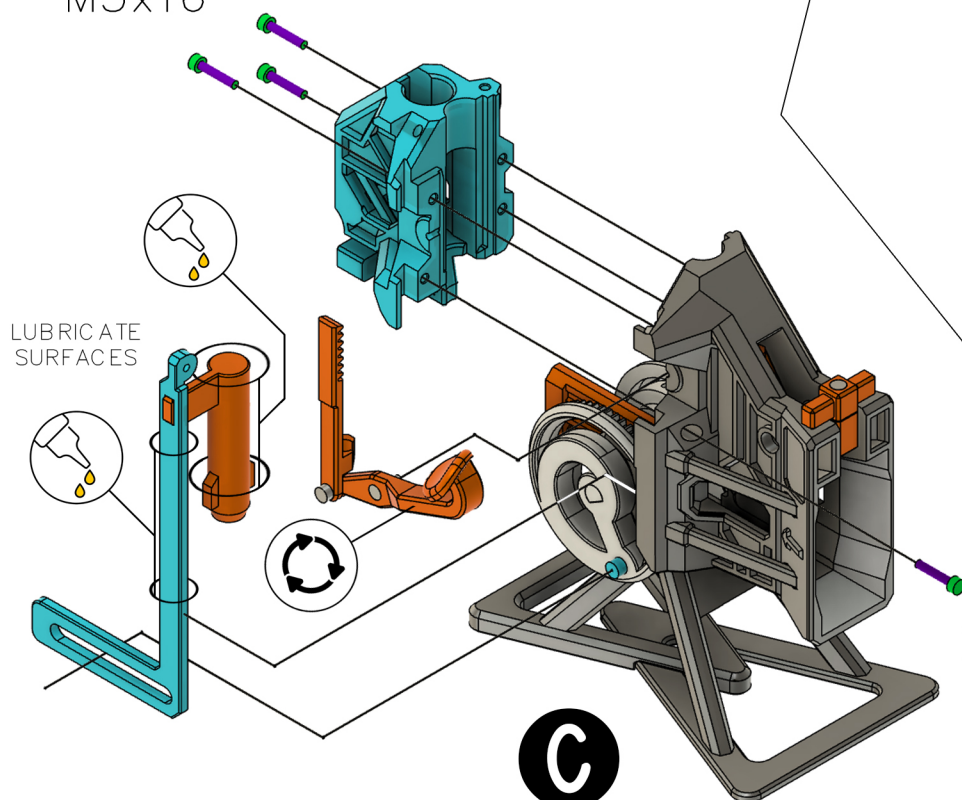
LUBRICATE
SURFACES



D

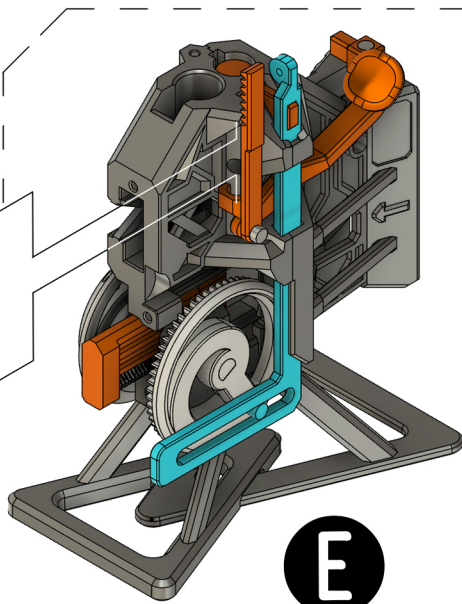


M3x16

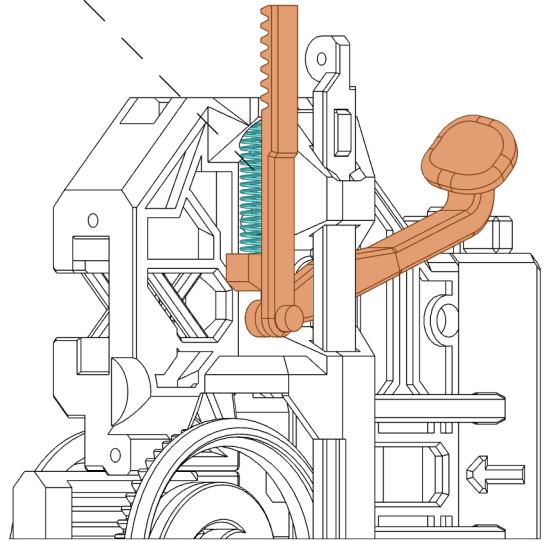


E

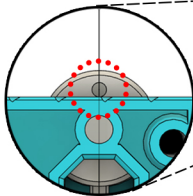

40MM
SPRING



E



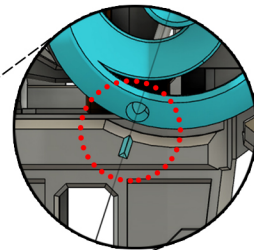
ROTATE GEAR UNTIL GRUB
SCREW IS AT THE
HIGHEST POINT



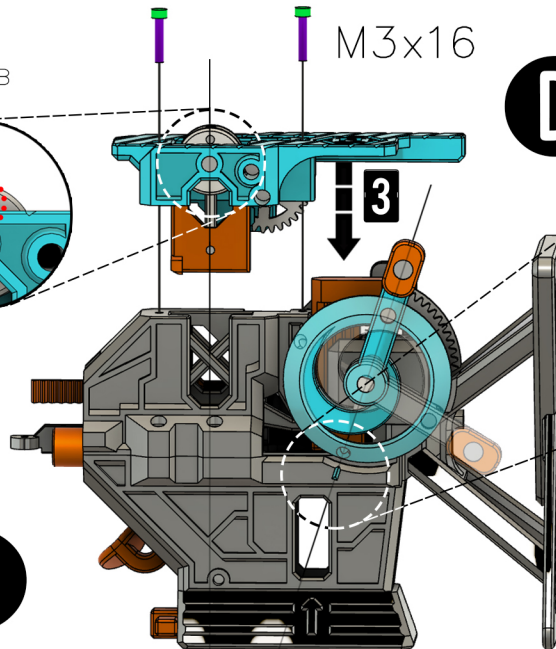
M3x16

D

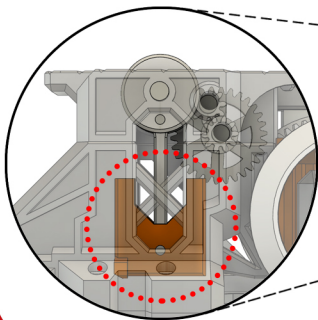
ROTATE HANDLE TO ALIGN
HOLE TO INDICATOR



E

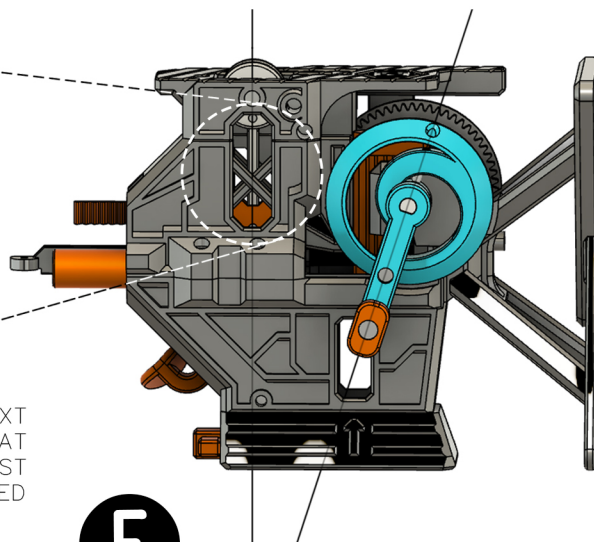


SETTING OF CRANK
AND PISTON TIMING



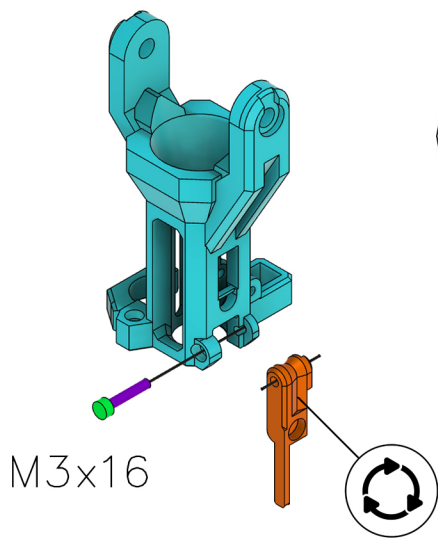
BEFORE PROCEEDING TO THE NEXT
STEP, CHECK AND ENSURE THAT
THE PISTON IS AT THE LOWEST
POINT WHEN HANDLE IS POINTED
AS SHOWN IN **F**.

F



ROTATE HANDLE
ANTI-CLOCKWISE
180 DEGREES

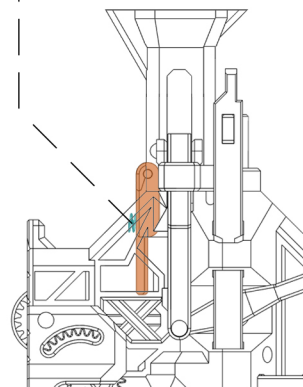
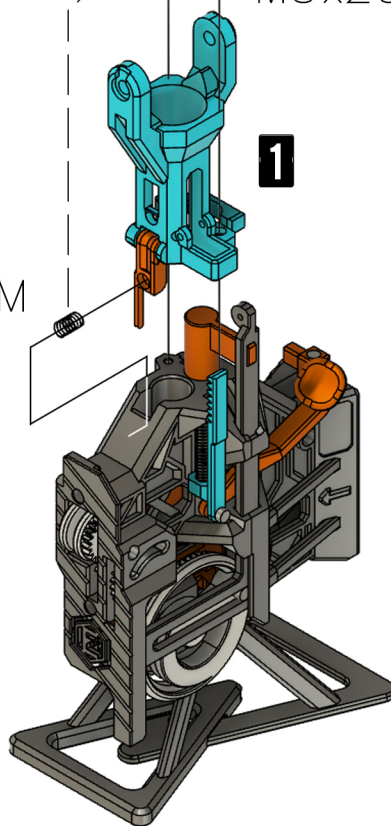
THE INITIAL ROTATION
WILL BE ROUGH



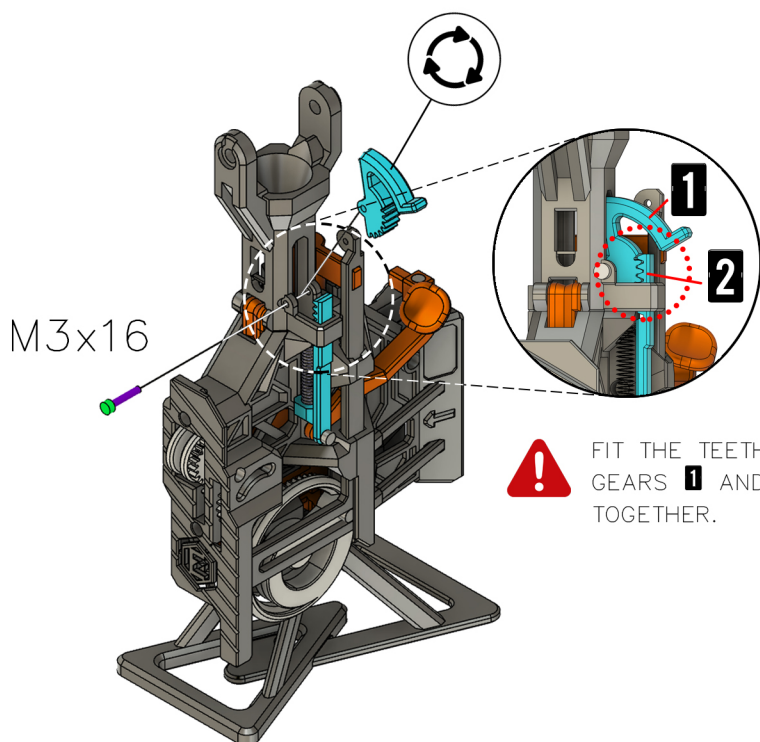
M3x16 M3x20

TIP: SLIP SPRING IN USING
TWEEZERS WHEN PART **1**
IS HALFWAY IN.

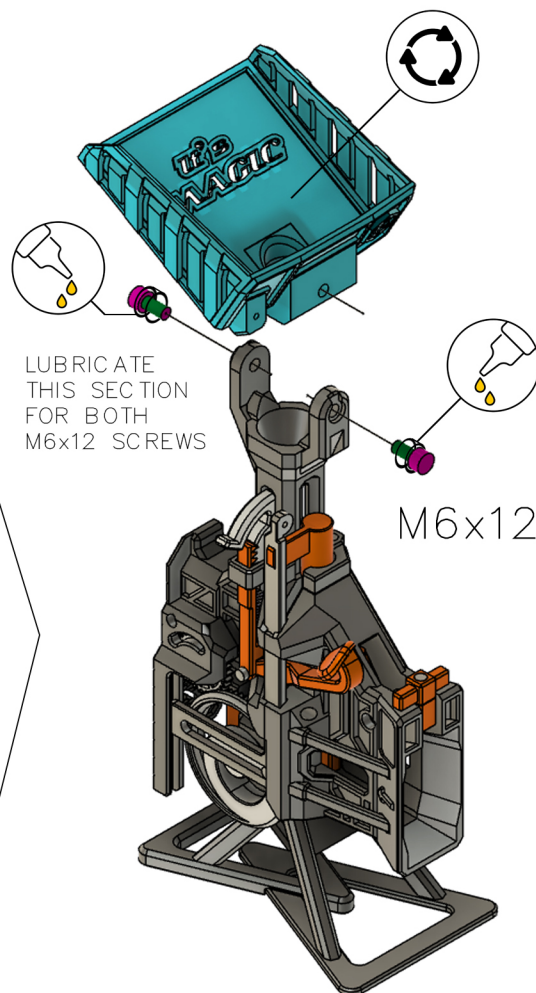

15MM
SPRING

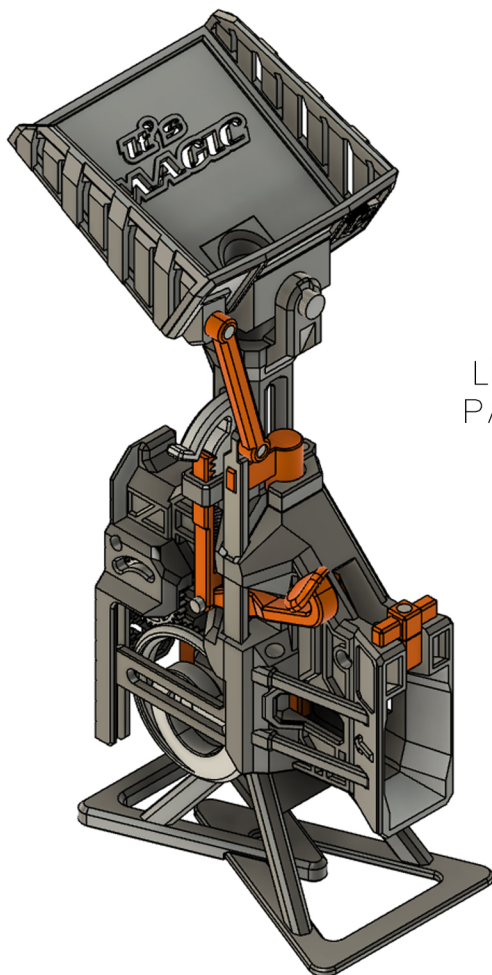
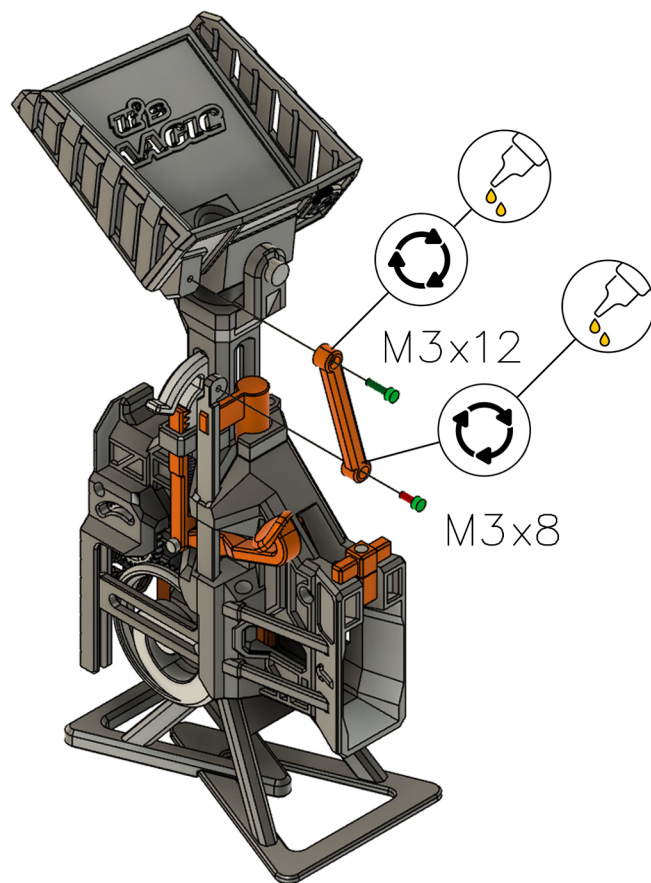


F



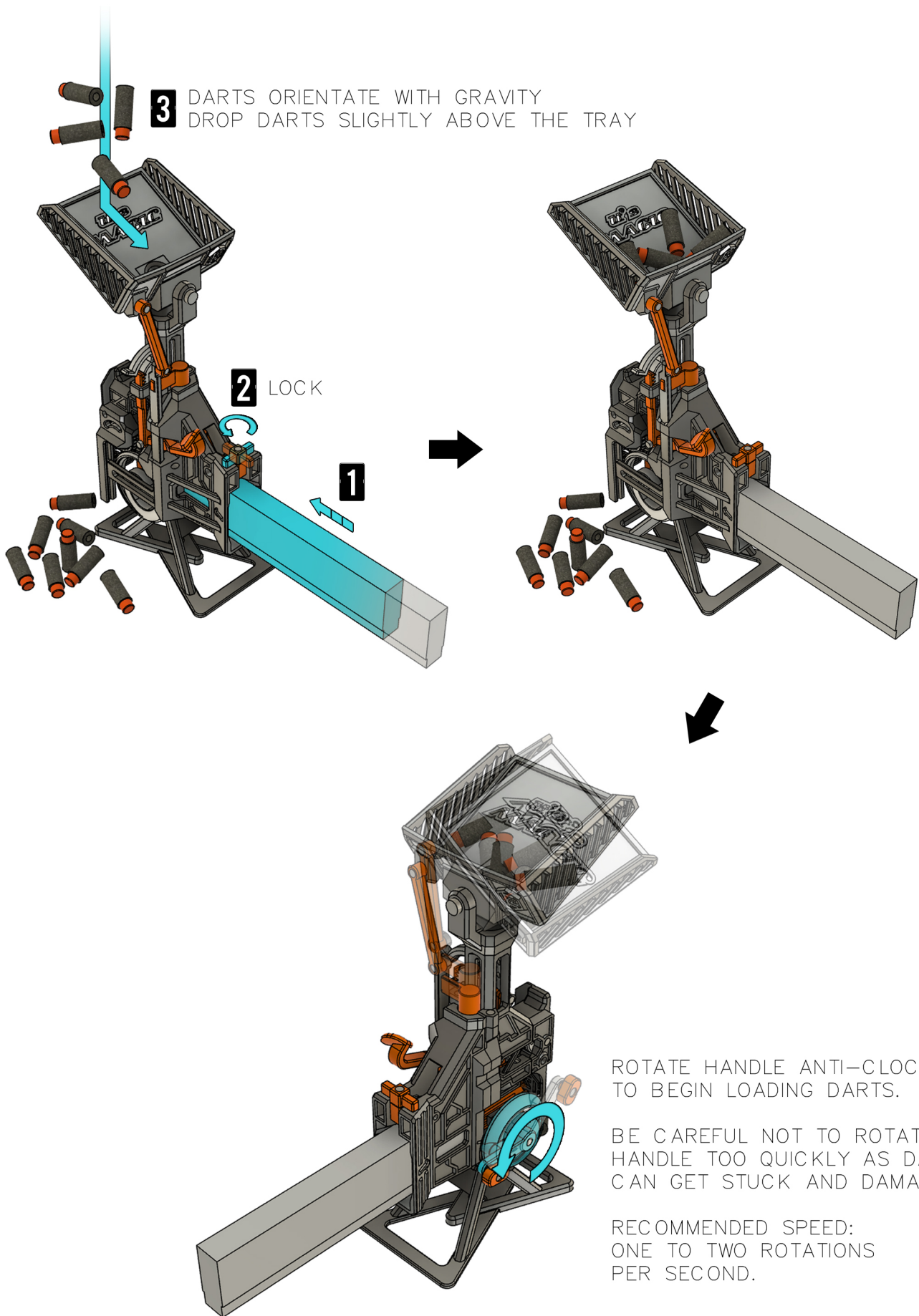
 FIT THE TEETH OF
GEARS **1** AND **2**
TOGETHER.





LUBRICATE GEARS AND MOVING PARTS UNTIL DART LOADER CAN BE OPERATED SMOOTHLY.

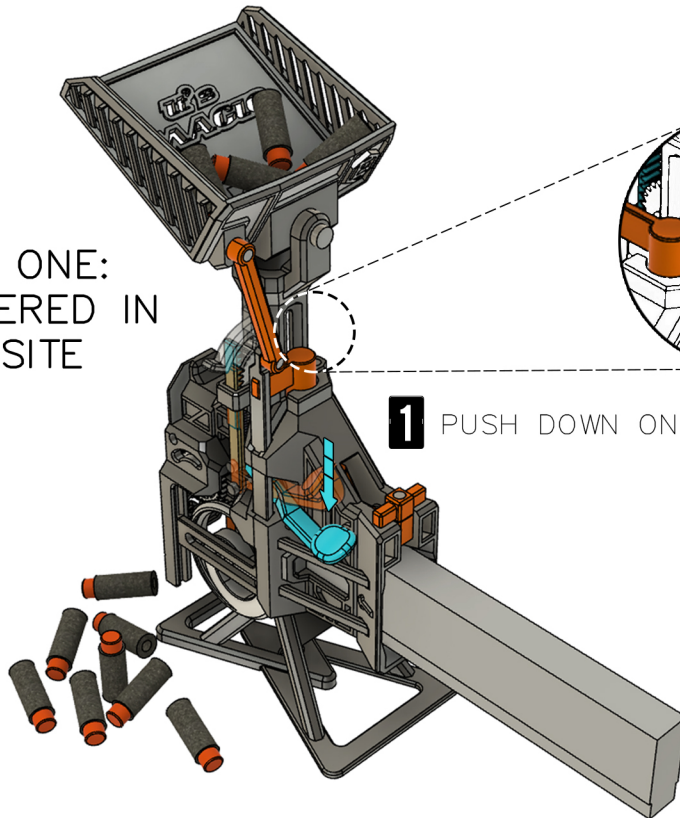
OPERATING THE MAGIC DART LOADER



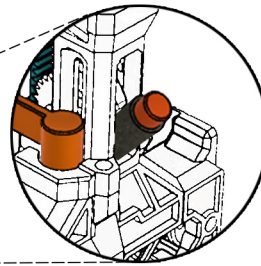
SOME DARTS ARE EASIER TO LOAD THAN OTHERS.
SHORTER DARTS WITH POINTED PLASTIC TIPS CAN LOAD MORE QUICKLY.

REMOVING STUCK DARTS

SCENARIO ONE:
DART ENTERED IN
THE OPPOSITE
DIRECTION



1 PUSH DOWN ON THIS LEVER

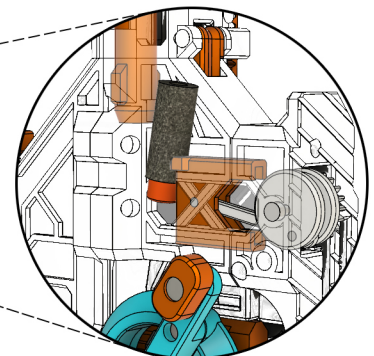
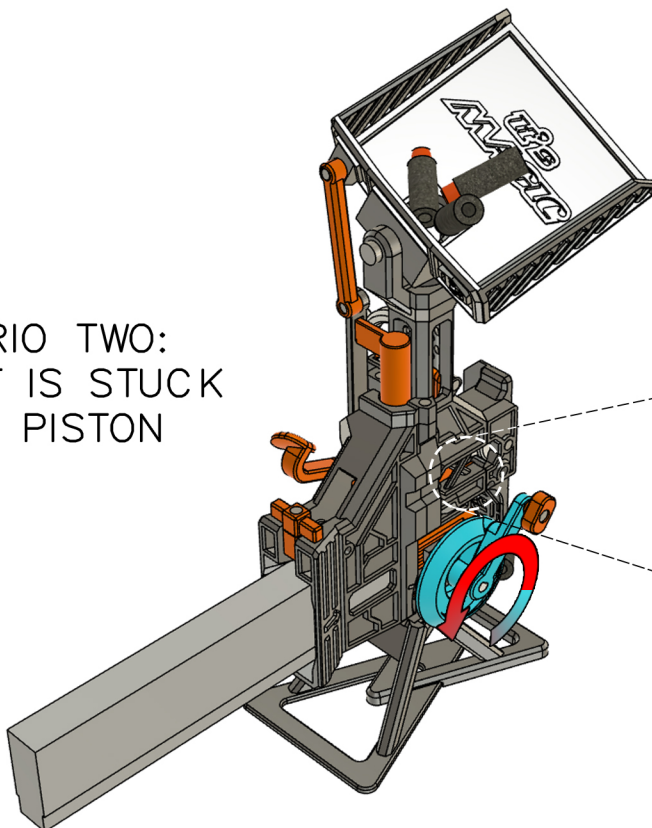


2 REMOVE DART
BY HAND

THIS WORKS ONLY FOR
DARTS THAT HAVE NOT
ENTERED THE LOWER
LOADING CHAMBER.

IF DARTS FREQUENTLY
ENTER IN THE OPPOSITE
DIRECTION, RAISE THE
DROP HEIGHT OF THE
DARTS OVER THE TRAY
FOR BETTER ORIENTATION.

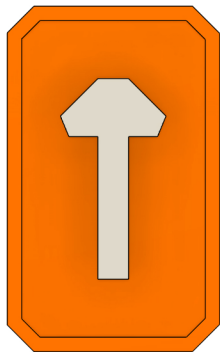
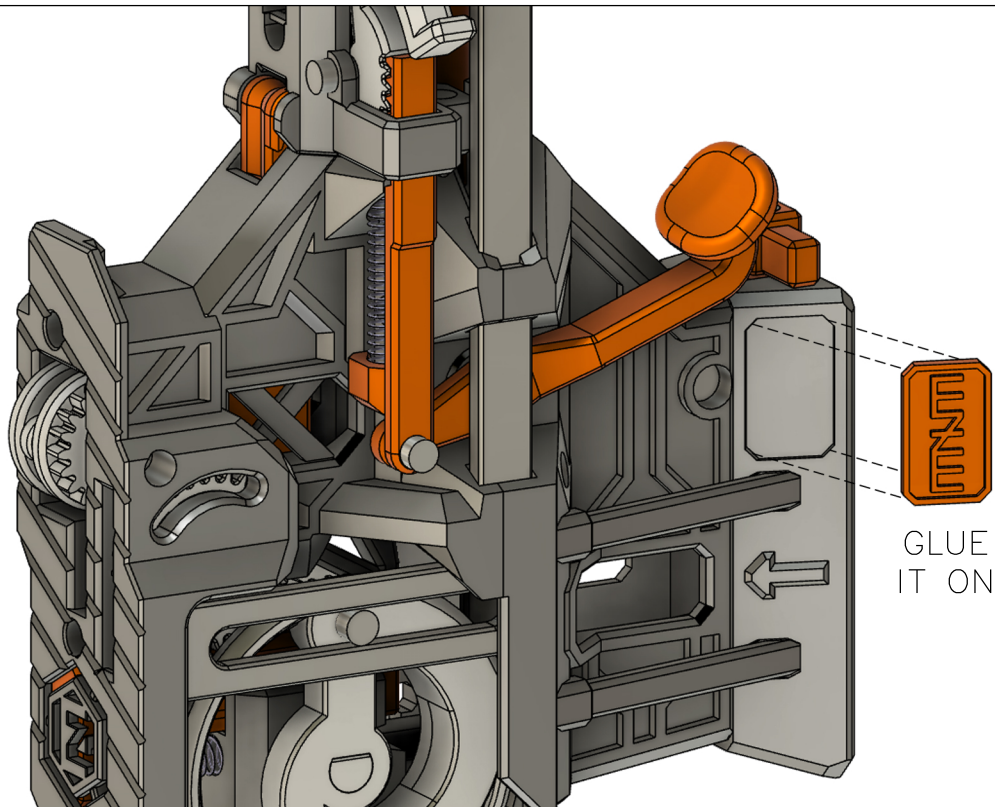
SCENARIO TWO:
A DART IS STUCK
AT THE PISTON



ROTATE HANDLE CLOCKWISE
TO ALLOW DART TO FALL
CORRECTLY AND THEN
RESUME NORMAL OPERATION.

GO SLOW WITH THE MAGIC DART LOADER, AND FAMILIARISE YOURSELF WITH ITS FEATURES.
MASTER IT BY UNDERSTANDING HOW IT FUNCTIONS AND ADJUSTING YOUR TECHNIQUE.

CUSTOMISE THE MAGIC DART LOADER WITH A PERSONALISED NAME PLATE



DOWNLOAD, DESIGN
AND PRINT YOUR OWN

ARROW INDICATES
RIGHT WAY UP

DOWNLOAD THE BLANK DESIGN FILE HERE
<https://www.createwithhezekiel.com/downloads>

